

**Rotary actuator**

for 2-way and 3-way ball valves

- Torque 2 Nm
- Nominal voltage AC 100 ... 240 V
- Control: Open-close or 3-point
- $k_{VS}$  setting (angle of rotation limiting)


**Technical data**

<b>Electrical data</b>	Nominal voltage	AC 100 ... 240 V, 50/60 Hz
	Nominal voltage range	AC 85 ... 265 V
	Power consumption	In operation 1.5 W @ nominal torque At rest 1 W For wire sizing 3 VA
	Connection	Cable 1 m, 3 x 0.75 mm <sup>2</sup>
	Parallel operation	Possible, note the performance data
<b>Functional data</b>	Torque (nominal torque)	Min. 2 Nm @ nominal voltage
	Manual override	Gear disengagement with magnet
	$k_{VS}$ setting	Angle of rotation limiting Starting at 90° ↯ (A – AB = 100%) in 2.5° ↯ steps Scale: 25 ... 100% of $k_{VS}$
	Running time	75 s / 90° ↯
	Sound power level	Max. 35 dB (A) (without ball valve)
	Position indication	Mechanical, pluggable
	<b>Safety</b>	Protection class
Degree of protection		IP54 in any mounting position NEMA 2, UL Enclosure Type 2
EMC		CE according to 2004/108/EC
Low-voltage directive		CE according to 2006/95/EC
Certification		cULus according to UL 60730-1A and UL 60730-2-14 and CAN/CSA E60730-1:02 Certified to IEC/EN 60730-1 and IEC/EN 60730-2-14
Mode of operation		Type 1
Rated impulse voltage		2.5 kV
Control pollution degree		3
Ambient temperature		–30 ... +50 °C
Medium temperature		+5 ... +80 °C in the ball valve
Non-operating temperature		–40 ... +80 °C
Ambient humidity		95% r.h., non-condensating
Maintenance		Maintenance-free
<b>Dimensions / Weight</b>	Dimensions	See «Dimensions» on page 2
	Weight	Approx. 220 g (without ball valve)

**Safety notes**


- The actuator has been designed for use in stationary heating, ventilation and air conditioning systems and is not allowed to be used outside the specified field of application, especially in aircraft or in any other airborne means of transport.
- **Caution: Power supply voltage!**
- It may only be installed by suitably trained personnel. Any legal regulations or regulations issued by authorities must be observed during assembly.
- The device may only be opened at the manufacturer's site. It does not contain any parts that can be replaced or repaired by the user.
- The device contains electrical and electronic components and is not allowed to be disposed of as household refuse. All locally valid regulations and requirements must be observed.

**Product features**

- Simple direct mounting** Straightforward direct mounting on the ball valve with only one screw. The mounting position in relation to the ball valve can be selected in 90° steps.
- Manual override** Manual override with magnet possible (the gear is disengaged as long as the magnet adheres to the symbol ⊕). The magnet for gearing latch is included as an accessory in the scope of supply.
- Adjustable angle of rotation** The rotary actuator can be adjusted beginning with 90° in 2.5° steps. The scale corresponds to 25 ... 100% of the  $k_{vs}$  value.
- High functional reliability** The actuator is overload-proof, requires no limit switches in intermediate positions and automatically stops when the end stop is reached (at rest).

**Accessories**

	Description
<b>Mechanical accessories</b>	Magnet for gearing latch Z-MA, packaging unit 20 pcs. (1 pc. in the scope of delivery of the actuator)

**Electrical installation**

**Wiring diagrams**

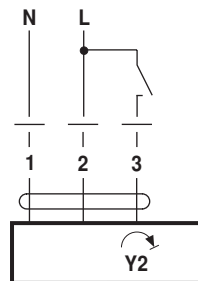
**Notes**

- Caution: Power supply voltage!
- Parallel connection of other actuators possible.

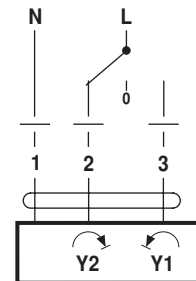
Note performance data for supply.



**Open-close control**



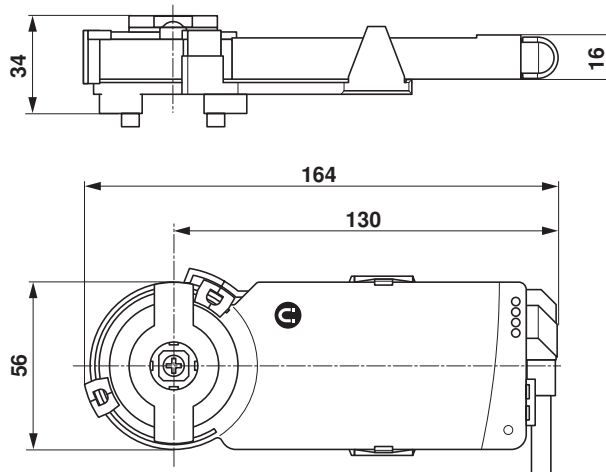
**3-point control**



Actuator	Valve
Y2	A - AB = 0%

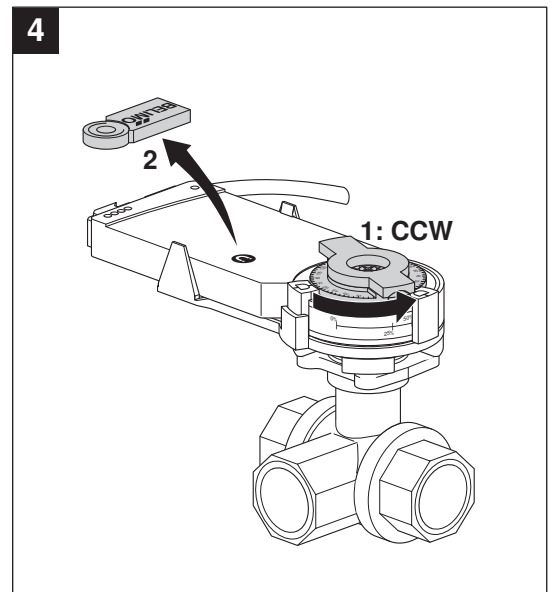
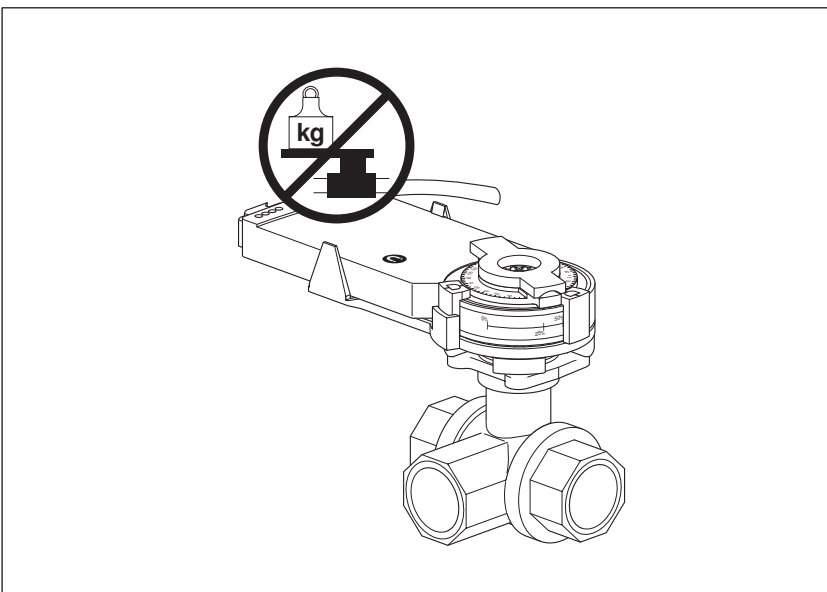
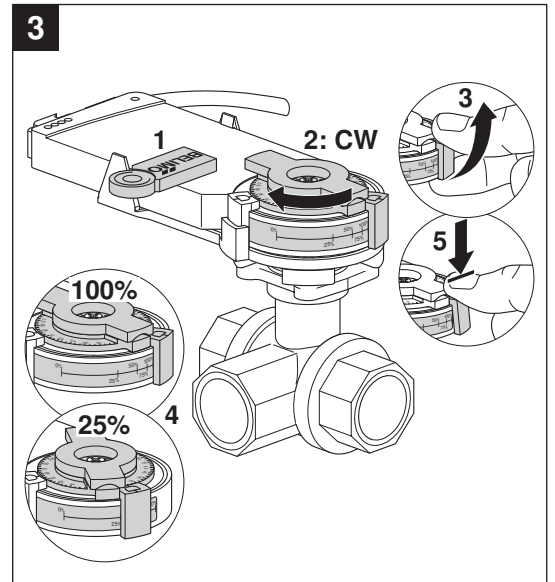
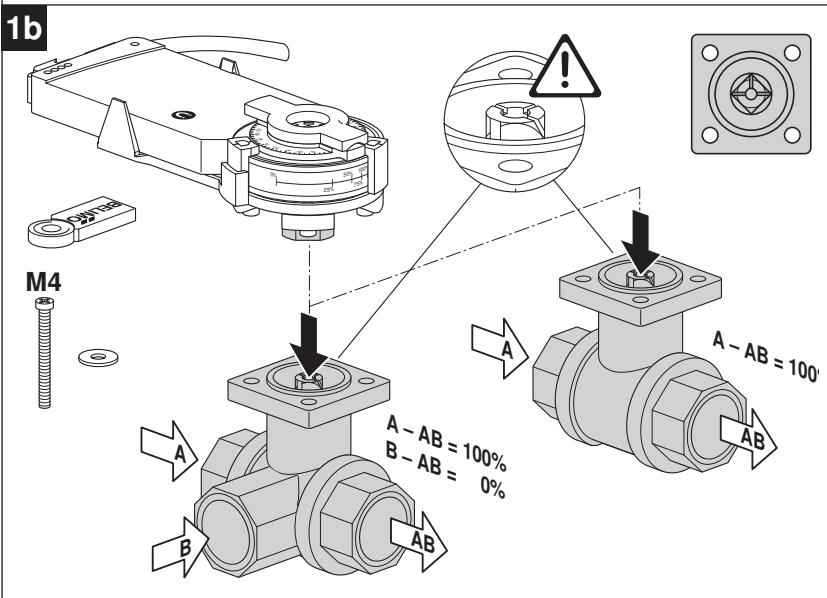
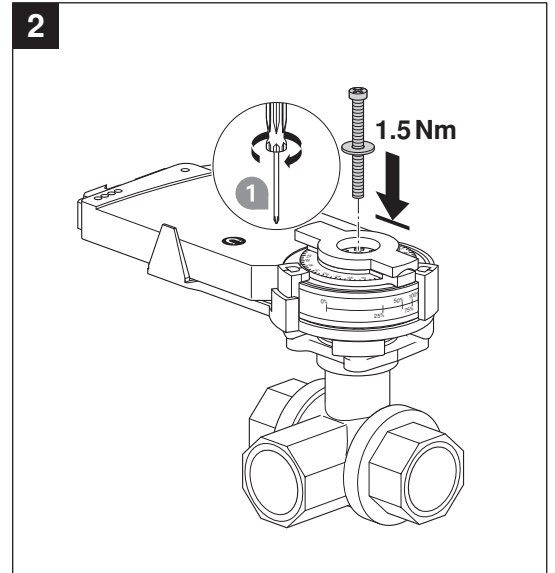
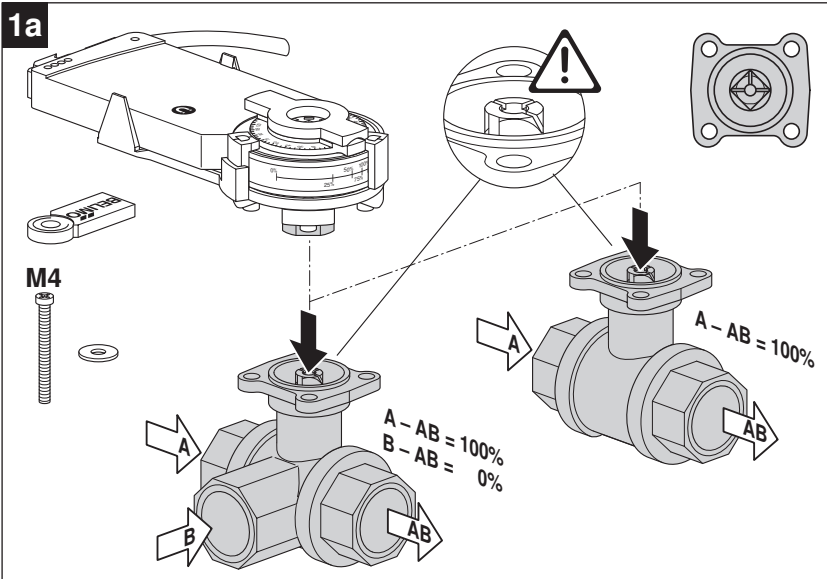
**Dimensions [mm]**

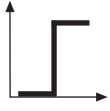
**Dimensional drawings**



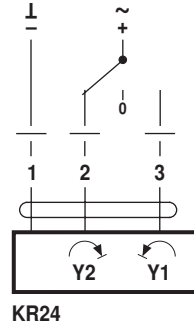
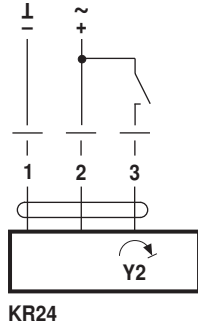
**Further documentation**

- Complete overview «The complete range of water solutions»
- Data sheets for ball valves
- Installation instructions for actuators and/or ball valves, respectively
- Notes for project planning (hydraulic characteristic curves and circuits, installation regulations, commissioning, maintenance, etc.)

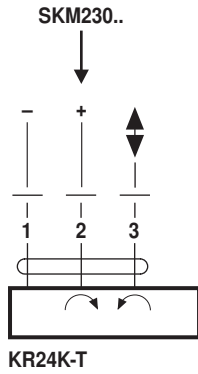




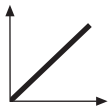
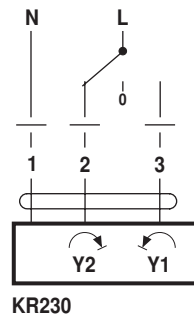
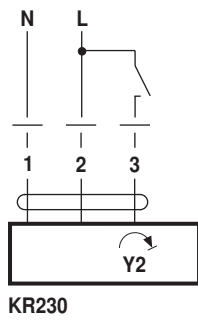
AC 24 V / DC 24 V



DC 24 V  
(SKM230..)



AC 100 ... 240 V ⚠



AC 24 V / DC 24 V

