

Pneumatic Valve Actuators

MP8000

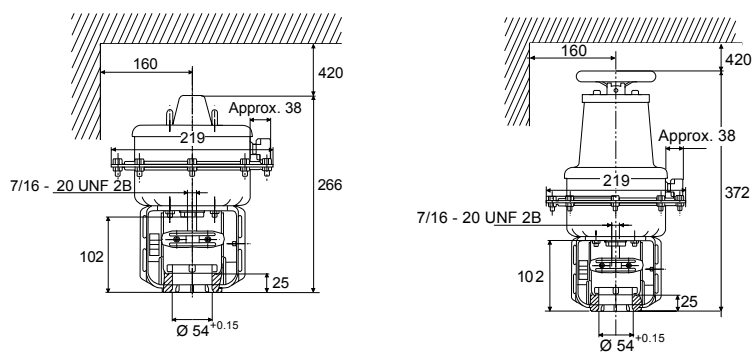
The MP8000 series pneumatic valve-actuators are designed to accurately position valve plugs in larger chilled water, hot water and steam applications in response to a pneumatic signal from a controller. A pneumatic positioner is also available for use in applications where sequential operation is desired or more positioning power and accuracy are required. They can be ordered as a factory fitted and ready-to-install valve/actuator combination or separately for local installation.

This robust actuator can be combined with VG8000 series flanged valves in accordance with the maximum close-off pressure ratings specified.



Features

- Pneumatic positioner
- Quick-fit coupler system
- Action reversible in-situ
- Optional hand wheel for factory or in-situ installation
- Optional auxiliary switches and feedback potentiometer available



Dimensions in mm

Ordering Codes	Positioner and hand wheel
MP822C50-20	None
MP822C60-20	DA positioner
MP822C70-20	DA positioner and hand wheel
MP822C80-20	Hand wheel
MP832C50-20	None
MP832C60-20	DA positioner
MP832C70-20	DA positioner and hand wheel
MP832C80-20	Hand wheel