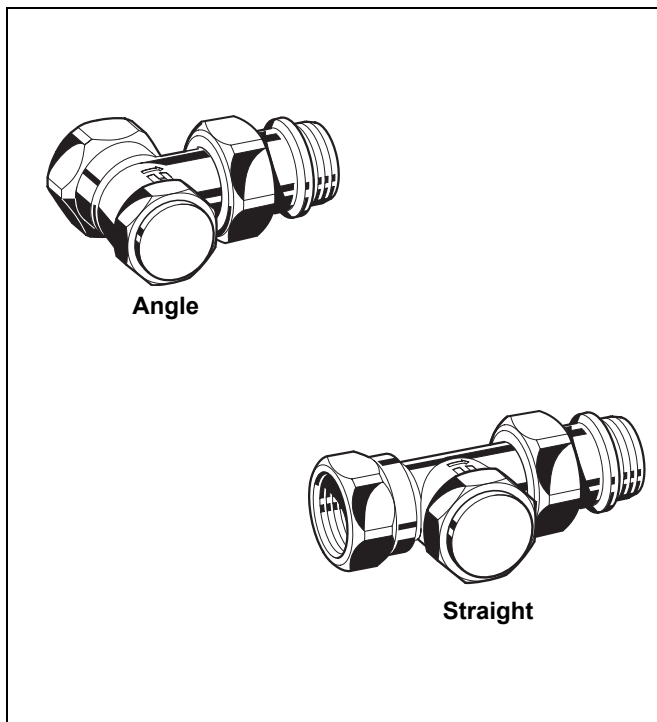


V340

VENUS series Lockshield Valves

FOR THE RETURN PORT OF RADIATORS, EXTERNAL THREADS

PRODUCT DATA



Application

VENUS series lockshield valves are used to connect radiators and other heat exchangers to heating circuits of hydronic heating systems. They are installed at the return port of the radiator and offer a shutoff function to separate the radiator from the heating circuit, for example for renovating.

Features

- With shutoff function for easy removal of connected radiator
- Connection to all types of pipework DN10 to DN15
- Tail piece with integrated EPDM O-ring

Specifications

Medium	Heating water, water quality to VDI2035
pH-value	8...9,5
Operating temperature	max. 120°C (248°F)
Operating pressure	PN 10
Differential pressure	max. 0.20 bar (2.9 psi) recommended for quiet operation

Design

The lockshield valves consist of:

- Valve housing PN10, DN10 or DN15 with
 - internal thread connection to ISO228-1 on inlet
 - external thread connection with union-nut and radiator tail-piece on outlet
 - angle and straight bodies with dimensions according to EN215, Appendix A, Series F
- Valve insert
- Protection cap
- Union-nut and radiator tailpiece

Materials

- Valve housing made of nickel-plated brass
- Valve insert made of brass with EPDM O-rings, soft seals and stainless steel spindle
- Protection cap made of grey plastic
- Union-nut and tailpiece made of nickel plated brass with EPDM O-ring

Dimensions and Ordering Information

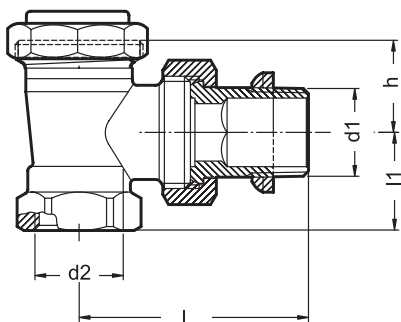


Fig. 1. Angle version

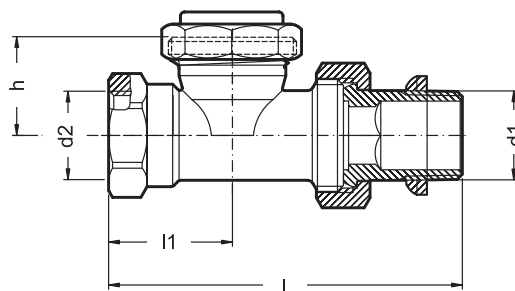


Fig. 2. Straight version

Table 1. Available versions and OS-Nos (OS=Ordering System)

Versions	DN	Dimensions					OS-No.
		d1	d2	l1	l	h	
Angle (Fig. 1)	10	Rp 3/8"	Rp 3/8"	20	49	21.5	V340E010
	15	Rp 1/2"	Rp 1/2"	23	53	21.5	V340E015
Straight (Fig. 2)	10	Rp 3/8"	Rp 3/8"	25	75	23	V340D010
	15	Rp 1/2"	Rp 1/2"	29	82	23	V340D015

NOTE: All dimensions in mm unless stated otherwise.

Accessories

Connections

Compression fitting for COPPER and STEEL pipe.

Consisting of compression nut and compression ring.

For valves with internal thread.



Valve size	Pipe dimension	Part number	Pcs/pack
3/8" (DN10)	10 mm	FIG3/8CS10	1
3/8" (DN10)	12 mm	FIG3/8CS12	1
1/2" (DN15)	10 mm	FIG1/2CS10	1
1/2" (DN15)	12 mm	FIG1/2CS12	1
1/2" (DN15)	14 mm	FIG1/2CS14	1
1/2" (DN15)	15 mm	FIG1/2CS15	1
1/2" (DN15)	15 mm	FIG1/2CS15-10	10
1/2" (DN15)	16 mm	FIG1/2CS16	1
3/4" (DN20)	18 mm	FIG3/4CS18	1
3/4" (DN20)	22 mm	FIG3/4CS22	1

NOTE: Support inserts have to be used for copper or soft steel pipe with 1.0 mm wall thickness. Max. operating temperature 120°C, max. operating pressure 10 bar.

Compression fitting for COPPER and SOFT STEEL pipe.

Consisting of compression nut, compression ring and support insert.

For valves with internal thread.



Valve size	Pipe dimension	Part number	Pcs/pack
3/8" (DN10)	12 mm	FIG3/8CSS12	1
1/2" (DN15)	12 mm	FIG1/2CSS12	1
1/2" (DN15)	14 mm	FIG1/2CSS14	1
1/2" (DN15)	15 mm	FIG1/2CSS15	1
1/2" (DN15)	16 mm	FIG1/2CSS16	1
1/2" (DN15)	18 mm	FIG1/2CSS18	1
3/4" (DN20)	18 mm	FIG3/4CSS18	1

NOTE: Support inserts have to be used for copper or soft steel pipe with 1.0 mm wall thickness. Max. operating temperature 120°C, max. operating pressure 10 bar.

Compression fitting for MULTILAYER pipe.

Consisting of compression nut, compression ring and support insert.

For valves with internal thread.



Valve size	Pipe dimension	Part number	Pcs/pack
1/2" (DN15)	16 mm	FIG1/2M16X2	1

NOTE: Max. operating temperature 90°C, max. operating pressure 10 bar.

Please note:

- To avoid stone deposit and corrosion the composition of the medium should conform with VDI-Guideline 2035
- Additives have to be suitable for EPDM sealings
- System has to be flushed thoroughly before initial operation with all valves fully open
- Any complaints or costs resulting from non-compliance with above rules will not be accepted by Honeywell
- Please contact us if you should have any special requirements or needs

Environmental and Combustion Controls

Honeywell GmbH

Hardhofweg

74821 MOSBACH

GERMANY

Phone: +49 (6261) 810

Fax: +49 (6261) 81393

<http://ecc.emea.honeywell.com>

EN0H-2205GE25 R0115

January 2015

© 2015 Honeywell International Inc.

Subject to change • All rights reserved

Manufactured for and on behalf of the Environmental and Combustion Controls Division of Honeywell Technologies Sàrl, Z.A. La Pièce 16, 1180 Rolle, Switzerland or its Authorized Representative.

Honeywell