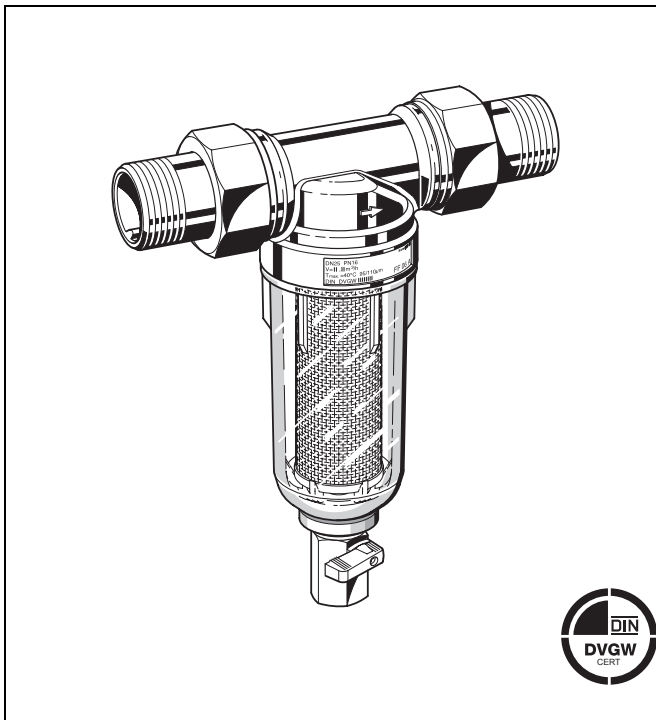


MiniPlus FF06

Rinsable fine filter

Product specification sheet



Construction

The fine filter comprises:

- Housing with female and male threads
- Threaded connections (version AA)
- Fine filter in clear filter bowl
- Ball valve
- Double wing wrench

Materials

- Body of dezincification resistant pressed brass
- Brass threaded connections
- Stainless steel fine filter
- Shock-resistant, transparent synthetic material filter bowl

Application

Rinsable MiniPlus FF06 fine filters ensure a continuous supply of filtered water. The fine filter stops the flow of particulates, for example rust particles, strands of hemp, or grains of sand. Sediment collected at the bottom of the filter bowl can simply be removed by rinsing the filter.

Compact in size, these filters were designed to fit where space is limited.

Special Features

- DIN/DVGW-certified
- Simple assembly
- Filtered water supply even during rinsing
- Shock resistant clear synthetic material filter bowl enables easy checking of filter contamination
- Filter and complete filter bowl are replaceable
- Body with female and male threads
- Meets KTW regulations for potable water

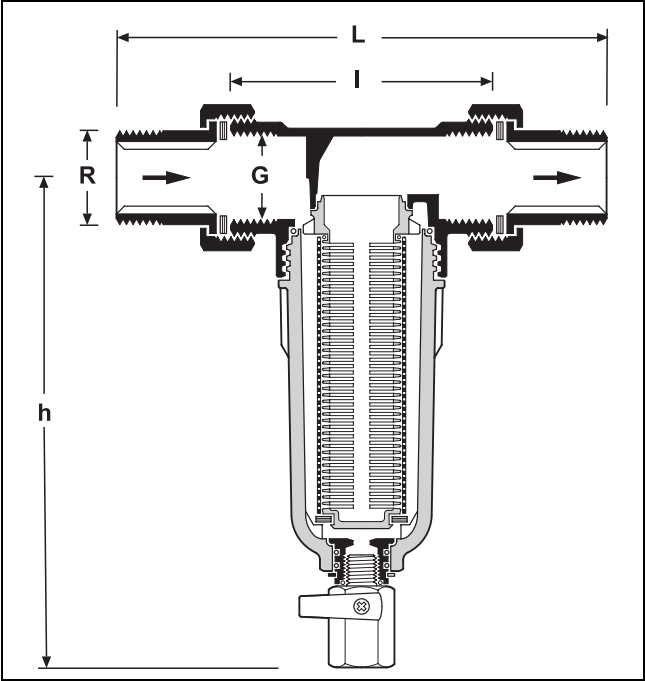
Range of Application

Medium Water

The filter is constructed for drinking water installations. In case of a process water application the filter has to be proven individually.

Technical Data

Installation position	Horizontal with filter bowl downwards
Operating pressure	Maximum 16.0 bar
Operating temperature	Maximum 40 °C
Connection size	1/2" , 3/4" , 1" , 1 1/4"



Method of Operation

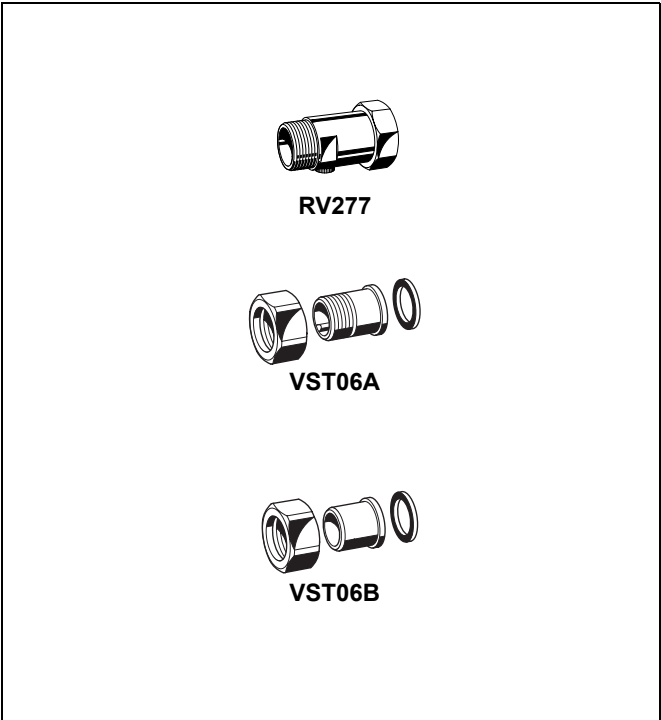
The fine filter is composed of a body and a rinsable fine filter insert.

During normal operation, water flows through the filter mesh to the body outlet. To rinse the filter, the ball valve is opened which discharges the dirt particles. A continuous supply of filtered water is available also during the rinse cycle.

Options

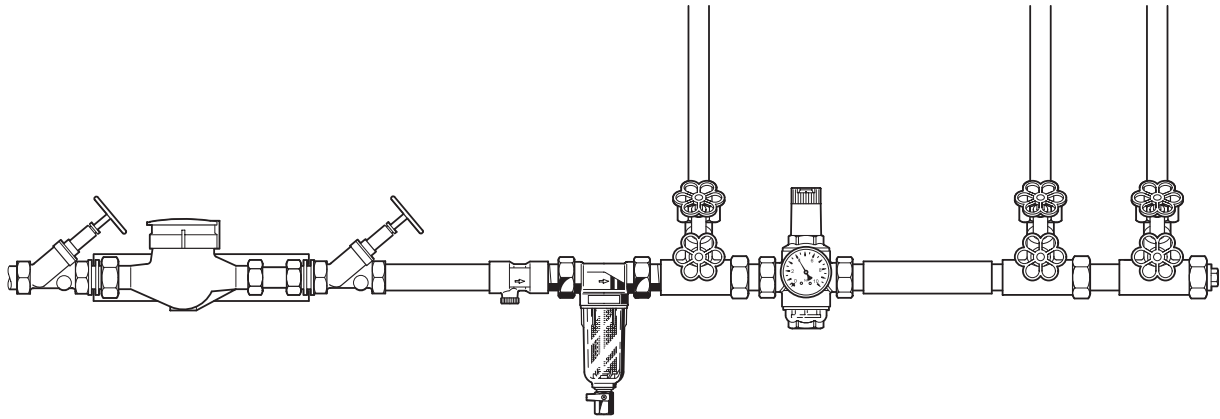
- FF06-...AA = Threaded male connections, filter mesh size 100 µm
- FF06-...EA = Without connections, filter mesh size 100 µm
- Connection size

Connection size	R	1/2"	3/4"	1"	1 1/4"
Internal threads	G	1/2"	3/4"	1"	-
Weight	approx. kg	0.7	1.0	1.3	1.5
Dimensions	mm				
	L	140	158	179	197
	I	80	90	100	105
	h	158	180	180	180
Flow value at Δp = 0.5 bar	m³/h	1,27	2,27	7,0	7,0
k _{VS} -value		4,0	5,8	10,4	10,4
DVGW registration number		NW-9301CM0399		-	-



Accessories

- RV277 Inlet check valve**
Available in sizes R1/2" - 2"
- VST06 Connection set**
Connection set
A = Threaded male connection;
B = Solder union connection

Installation Example**Installation Guidelines**

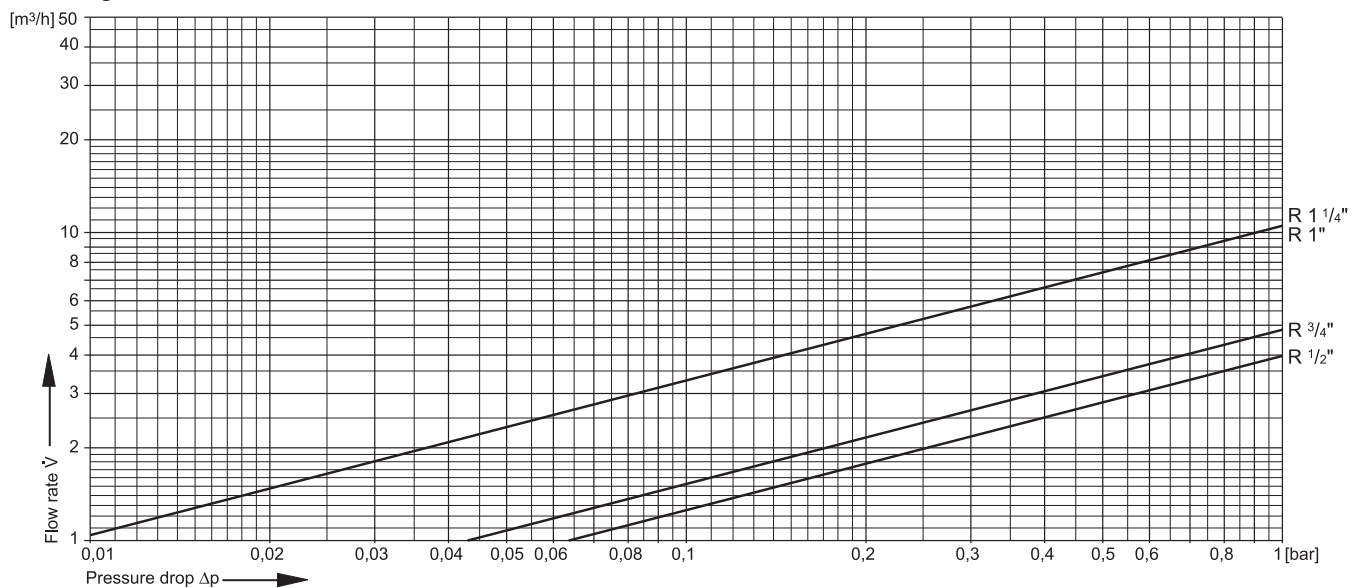
- Install in horizontal pipework with filter bowl downwards
 - This position ensures optimum filter efficiency
- Install shutoff valves
 - Degree of contamination can be seen with clear filter bowl
 - Simplifies maintenance and inspection
- The installation location should be protected against frost
 - Corresponds to EN 806-2

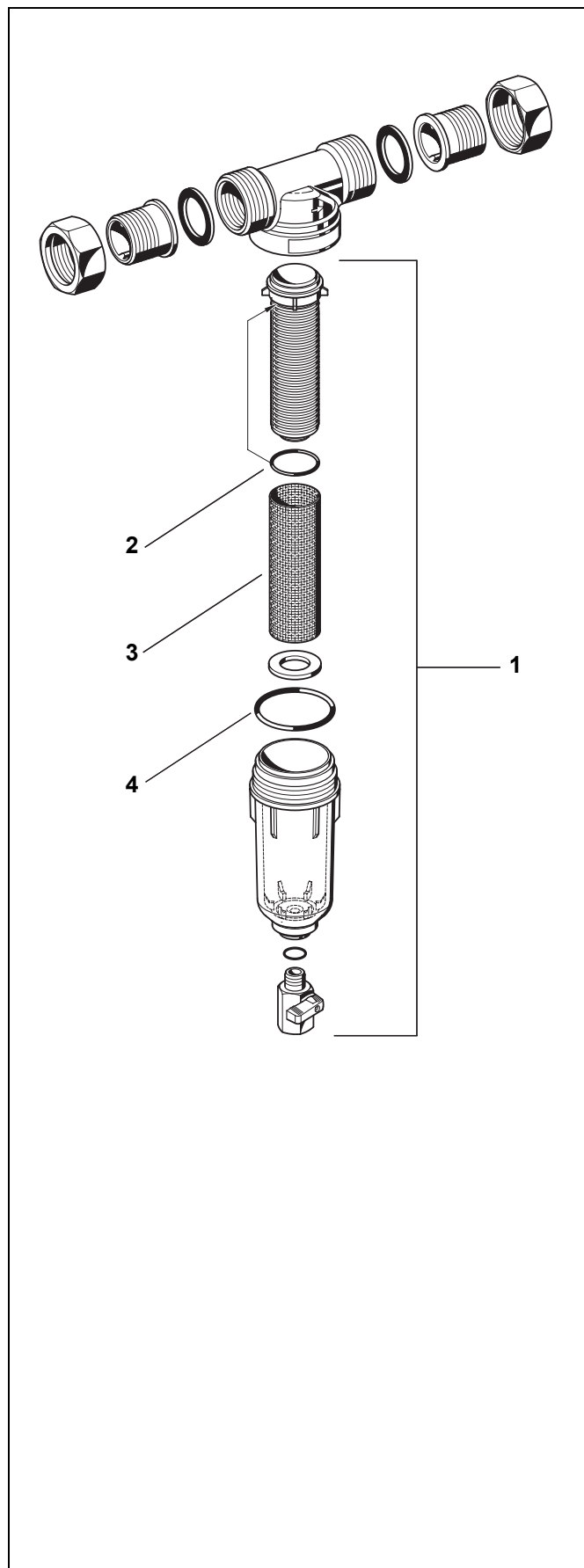
Typical Applications

Fine filters of this type are suitable for supplies to buildings of all types. They can also be used for commercial and industrial applications within the limits of their specifications.

Fine filters of this type are installed:

- If the downstream system includes appliances which must be protected against dirt
- Where no pressure reducing valve is required (maximum 5.0 bar static pressure)
- Where a pressure reducing valve is already fitted but cannot be retrofitted with a filter

Flow Diagram



Spare Parts

MiniPlus FF06 Fine Filters (From 1997 onwards)

1	Clear filter bowl	1/2"	KF06-1/2A
	complete with sieve	3/4" - 1 1/4"	KF06-1A
	100µm and mesh carrier		
2	O-ring set for	1/2"	0903127
	mesh carrier	3/4" - 1 1/4"	0903128
3	Replacement sieve	1/2"	AS06-1/2A
	100µm	3/4" - 1 1/4"	AS06-1A
	Replacement sieve	1/2"	AS06-1/2C
	50µm	3/4" - 1 1/4"	AS06-1C
4	O-ring set	1/2"	0901246
	for filter bowl	3/4" - 1 1/4"	0901499
5	Double ring wrench		
	For removing filter bowl (no fig.)	1/2" - 1 1/4"	ZR06F

Automation and Control Solutions

Honeywell GmbH
 Hardhofweg
 74821 MOSBACH
 GERMANY
 Phone: (49) 6261 810
 Fax: (49) 6261 81309
<http://ecc.emea.honeywell.com>

Manufactured for and on behalf of the
 Environmental and Combustion Controls Division
 of Honeywell Technologies Sàrl, Z.A. La Pièce 16,
 1180 Rolle, Switzerland by its Authorised Representative Honeywell GmbH

EN0H-1115GE23 R0115
 Subject to change without notice
 © 2015 Honeywell GmbH

Honeywell